

## TRACKER CONFIGURATION

Register the owner tel. number (M1) in tracker memory to be able control the tracker and receive notifications. Commands from M1 number are sent without GSM-password. To send commands from other numbers need to add GSM-password in beginning of SMS command text (for example, to request vehicle positioning send following SMS - command: **1234 40**, where **1234** – GSM -password, **40** – command code).

Use following SMS-command to register M1 telephone number and GSM-password: **XXXX M1 YYYY TEL**, where **XXXX** – service code, specified in the personal plastic card, **YYYY** – your GSM-password, **TEL** – M1 owner telephone number in international format.

The manufacturer reserves the right to modify and improve the product design and technical features without prior notice.

Manufacturer:  
ScPA "StarLine" LLC,  
Komissara Smirnova str., 9,  
194044, Saint-Petersburg, Russian Federation  
Tel. +7 812 3263333

[www.alarmstarline.com](http://www.alarmstarline.com)

### GSM commands list

GSM command	Command description
<b>40</b>	Location request
<b>GPS</b>	
<b>XXX</b>	SIM-card balance request, where <b>XXX</b> – operator USSD command code
<b>45</b>	Request for location and GSM+GPRS signal quality
<b>BALANCE</b>	
<b>MONEY</b>	
<b>06</b>	GSM-password request
<b>GSMPSW?</b>	
<b>07</b>	
<b>TEL</b>	Request for the registered telephone numbers
<b>PHONES</b>	
<b>09</b>	Request for GSM signal quality and firmware version
<b>INFO</b>	
<b>0000XXXX</b>	
<b>0000 XXXX</b>	Record new guest GSM - password, where <b>XXXX</b> - new password
<b>GSMPSWXXXX</b>	
<b>GSMPSW XXXX</b>	
<b>0001XXXX</b>	Record new M1 tel. number, where <b>XXX</b> – new tel. number in international format +12345978910.
<b>00011 XXX</b>	
<b>M111XXXX</b>	M1 owner tel. number cannot be deleted.
<b>M111XXXX</b>	

GSM command	Command description
<b>9900PIN1XXX</b>	Emergency M1 tel. number changing:
<b>9900 PIN 1 XXX</b>	PIN – emergency disarm code (from guest tel. numbers the GSM-password should be added before)
<b>WM1PIN1XXX</b>	XXX – new tel. number. Tel. number in international format should begin with "+", then country code and local number of at least 5 digits. This command can be sent from any tel. number.
<b>00961</b>	Require for GSM-password from M1
<b>M1PSW+</b>	
<b>00960</b>	Do not require for GSM-password from M1
<b>M1PSW-</b>	
<b>00550</b>	Disable GPRS
<b>GPRS-</b>	
<b>00551</b>	Enable GPRS
<b>GPRS+</b>	
<b>GPRS?</b>	GPRS status request
<b>00520</b>	Disable SMS-alert on switch to roaming
<b>00521</b>	Enable SMS-alert on switch to roaming
<b>00522</b>	Enable SMS-alert on switch to roaming with automatic GPRS disabling
<b>00523</b>	Enable GPRS in roaming
<b>00524</b>	Disable GPRS in roaming
<b>APN NAME</b>	Record Internet access APN for active SIM-card, where: NAME - APN address, mandatory parameter (for example, internet.mts.ru)
<b>LOGIN PSW</b>	LOGIN PSW – login and password for access, not mandatory parameters (for example, mts mts) If no any parameter is specified, so APN settings will be erased

# StarLine® M18, M18PRO



## USER MANUAL



Version 1.15

## GENERAL DESCRIPTION

StarLine M18 tracking device allows to determine an object location with GPS and GLONASS global satellite navigation systems.

Device can be fitted in a car, boat or a cargo.

Real time tracking is available at [starline.online](http://starline.online) free web service and in StarLine mobile App. Use preregistered individual login and password specified in personal plastic card to a personal account access.

Login	Emergency disarm code
Password	Service (Valet) code
Login and password for access to <a href="http://starline.online">starline.online</a> private account	

Tracker will send SMS message with a web-link to an object coordinates on request from an owner.

## HOUSING LED INDICATION

After power activation the LED on the tracker housing is continuously lighting withing one hour, then begins flashing once per 10 sec.

Light color	Interpretation
green	connection with server established, GPS+GLONASS coordinates determined
red	power is On, no connection with server
blue	connection with server established, GPS+GLONASS coordinates not determined
violet	device is connected to computer with StarLine Master program loaded

## TECHNICAL FEATURES

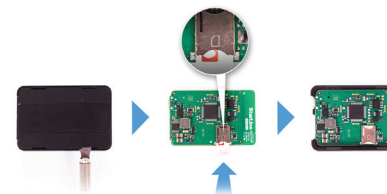
Parameters	Values
GSM band	2G 850 900 1800 1900 MHz
SIM card slot	1 NanoSIM
GSM antenna	embedded
GPS GLONASS receiver	embedded
Interfaces	1 microUSB
GPS GLONASS receiver sensitivity	• -148dBm — "cool" start • -163dBm — "hot" start • -165dBm — in tracking mode
Power supply	8 – 32 V
Working temperature range	-40 ... +85 °C
Main unit dimensions	64x44x13,5 mm
Weight	33 gr

## TRACKER CONNECTION

### SIM-card installation

Open the device box with metal thing and insert SIM-card in the slot on circuit board.

Put the board and cover back.



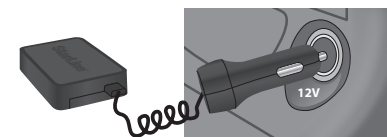
### Fitting recommendations

Place the tracker so that it's lid with StarLine logo is directed towards the sky. Device should not be shielded with metal parts and materials.

**!** GPS+GLONASS signal can penetrate glass, plastics, dashboard and doors decoration, but can not go through metal body parts, metal tint films and other metal surfaces.

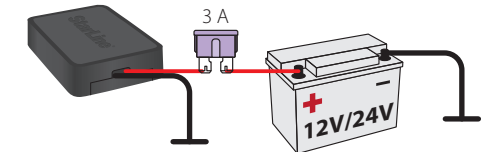
### StarLine M18 connection diagram

Connect tracker to the lighter socket with adapter.



**!** The power is not supplied with USB connection to computer.

### StarLine M18 Pro connection diagram



**!** Apply to a qualified fitter for this way of installation.

## MONITORING

Real time object tracking is available at [starline.online](http://starline.online) free web platform or in free StarLine mobile application.

Tracker has 3 monitoring modes:

- **tracking by motion sensor**  
In this mode tracking of object begins with moving.
- **continuous tracking (default)**  
In this mode an object location is permanently monitored.
- **tracking at every 30 min**  
In this mode tracker activates GPS+GLONASS receiver every 30 min. If satellites are not found, the receiver will be disabled after 5 min.

**i** The monitoring mode can be selected in StarLine Master software.