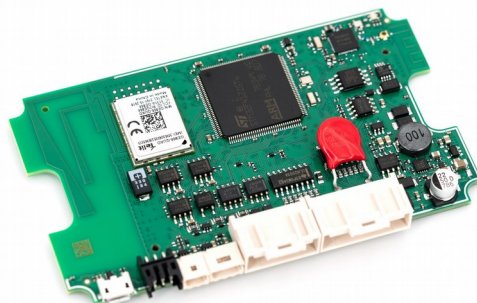


Starline S9v2 series car security and telematic system (vehicle alarm system) is used to enhance vehicle security and comfort features. This system can be installed on any road vehicle with 12V on board power.

Main unit



Main unit PCB



Individual package



Links

[Website page](#)

[Manual instruction](#)

[Connection diagram](#)

[Firmware](#)

[Configuration software](#)

Technical specification

Integrated GSM module optional:

2G version - 2G GSM / GPRS 850/900/1800/ 1900 MHz

4G version - LTE B1/B3/B7/B8/B20; 3G WCDMA B1/B8; 2G GSM 900/1800

External GNSS receiver (GPS+GLONASS)

Bluetooth Low Energy chip 2.4Ghz

Bluetooth 2.4Ghz tags with Li-ion battery CR2032 3V

Central unit input power – 8 – 16V

Rated current consumption – 15,2 mA

Central unit dimensions 106x63x17 mm

Working temperature range -40... +85 °C

Weight – 63 gr

Wire interfaces:

- 2 x CAN bus, 4 x LIN bus

- 1 x microUSB

- 1 x StarLine-bus

- 24 programmable channels: 15 open collector outputs 0.2A, 2 positive outputs 2A, 3 positive inputs, 3 negative outputs, 1 universal input

- external temperature sensor connector

- external microphone connector

- service button & external radio transceiver connector

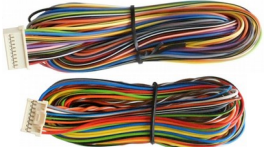






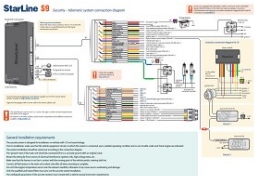

- GNSS receiver connector

Main features

- Supper Slave control with factory security and authorization with Bluetooth tag or smartphone
- Pin-to-Drive authorization with car factory buttons
- Subscription free remote control and tracking at mobile App or [starline.online](#)
- Remote engine start & data bypass of factory immobilizer
- Digital and analogue engine blocking
- Secure factory Keyless-Go system
- 2CAN+4LIN digital interfaces
- StarLine Bus digital wired interface for the optional modules
- Bluetooth Smart short range control and owner authorization
- Built-in 3D accelerometer (shock, inclination and motion sensor)
- Service (valet) button with LED indicator
- Universal programmable input & output channels
- FlexibleLogic – programmable operation scenarios
- Smart vehicle diagnostics by OBDII
- Webasto, Eberspacher parking heaters remote control
- Hands Free mode (aftermarket Keyless entry)
- Driving style rate evaluation
- Anti-hijack mode

Delivery sets

Components	Picture	S9v2 2G Lite	S9v2 2G GPS Lite	S9v2 2G GPS	S9v2 4G	S9v2 4G GPS
1. Main unit StarLine S9v2		+	+	+	+	+
2. Bluetooth transponders (tags) 2 pc		optional	optional	+	+	+
3. External RF868 MHz transceiver		optional	optional	optional	optional	optional
4. 2-way LCD remote RF868 MHz		optional	optional	optional	optional	optional
5. GNSS receiver (GPS+GLONASS)		optional	+	+	optional	+
6. Engine start relay module with wiring and fuse 20A		optional	optional	optional	optional	optional
7. External engine temperature sensor		optional	optional	optional	optional	optional
8. External microphone		optional	optional	optional	optional	optional
9. Service (valet) button		+	+	+	+	+

10. Cable harness XS1 + XS2		+	+	+	+	+
11. USB / micro USB cable		+	+	+	+	+
12. Car relay 12V with socket and wires		+	+	+	+	+
13. Piezo siren 5W 12V 120dB		+	+	+	+	+
14. Fuse 3A with holder		+	+	+	+	+
15. Installation kit: hood trigger switch, blade connector, ring connector, diode 1N4004 (4), plastic straps (2)		+	+	+	+	+
16. Personal ID card		+	+	+	+	+
17. User manual and connection diagram EN		+	+	+	+	+
18. Color gift box		+	+	+	+	+